

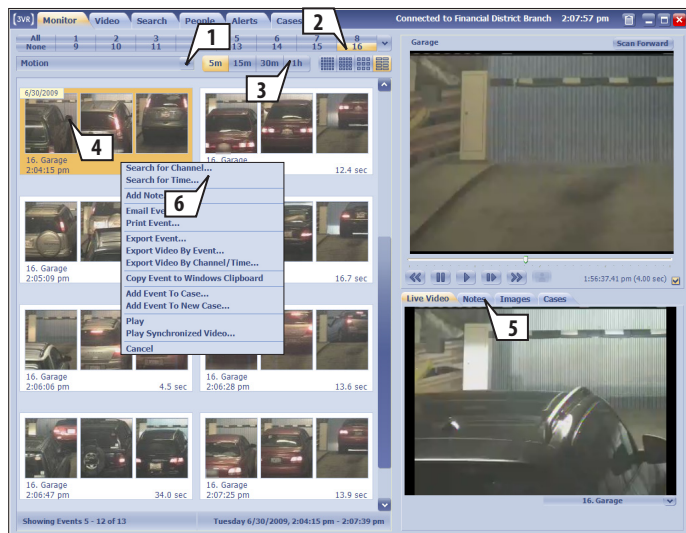


3VR OpCenter Quick Reference Sheet

Monitor Panel

The **Monitor** panel displays event cards as they are captured on the system.

- To view events, first select an event type from the dropdown menu (1). You can filter the event cards that appear by channel (2) and time (3).
- Clicking an event card (4) will display the video clip associated with the event. Use the sub-tabs in the lower-left panel (5) to view event images, add a note, or add the event to a case.
- To export an event, right-click the event card and choose whether to print, email, export as an xml file, or save the event to the Windows clipboard.
- Right-click the event and select **Search for Channel** or **Search for Time** (6) to search for related events.



Video Panel

The **Video** panel allows you to stream both live and stored video from selected channels.

- To watch live video, select **Display live video** (1). Use the channel selector menu at the bottom-right of each video panel to choose which channels to watch (2). When streaming live video, the timeline indicator (3) shows the current time.
- To view video recorded in the past, select **Display stored video starting at** and choose a time frame from the dropdown menu (4). To move forward and backward in time, drag the time indicator.
- Click the **Export** button (5) to save recorded video from one or more channels to your computer. Checking the box to **Include EvidenceViewer** will allow the person receiving the video to watch multiple channels of saved video simultaneously.



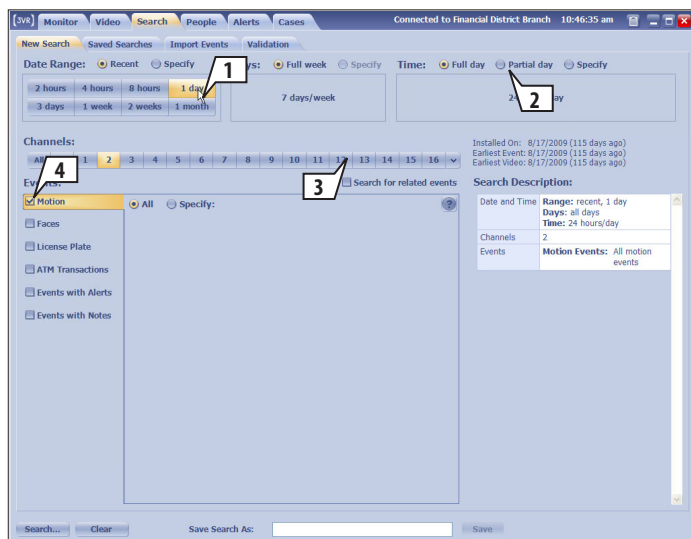
Search Panel

The **Search** panel allows you to search through stored video for events of interest. To perform a search, select a date (1) and time (2), at least one camera channel (3) and one event type.

Each event type has its own set of properties that may be incorporated in your search; to view the options available for a given event type, check the box next to the event type – for example, **Motion** (4) – and select **Specify**. Some of the possible search properties* include:

- Direction of motion
- Event note text
- Alert color
- Face similarity

*The available search options may differ from the ones listed here, depending on the analytics and plug-ins that have been installed/enabled on the system.



People Panel

The **People** panel allows you to view profiles of known people in the system*.

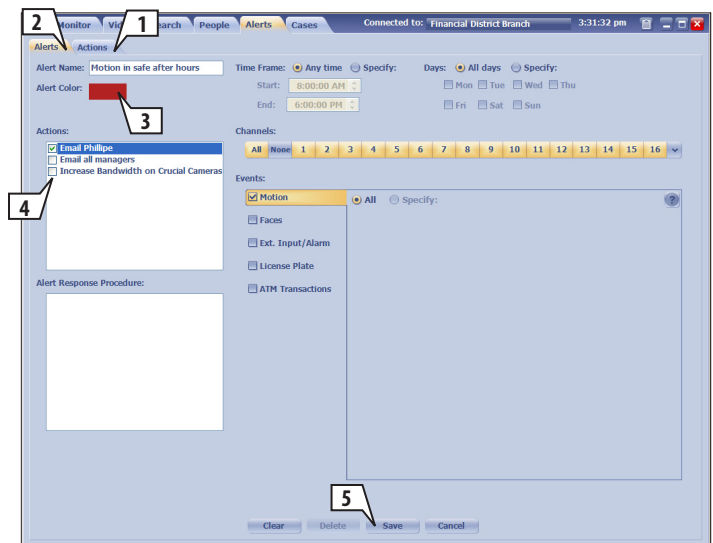
- To save a new person from an event in the **Monitor** or **Search** panels, click the event card and fill out the fields in the **Person** sub-tab that appears to the right. Once you click **Save**, a record of that person will appear in the **People** panel. Saved information about a person (1) can be viewed at any time by clicking on their person card (2).
- In the **Profiles** sub-tab (3), you can view all event card images that have been linked to the selected person.
- View and add notes to a selected person card in the **Notes** sub-tab (4).
- Users with many saved people will find it helpful to categorize people into groups. Click the **Edit Groups** button (5) to define new categories of people.



*This discussion of the **People** panel assumes that face recognition is enabled on the system.

Alerts Panel

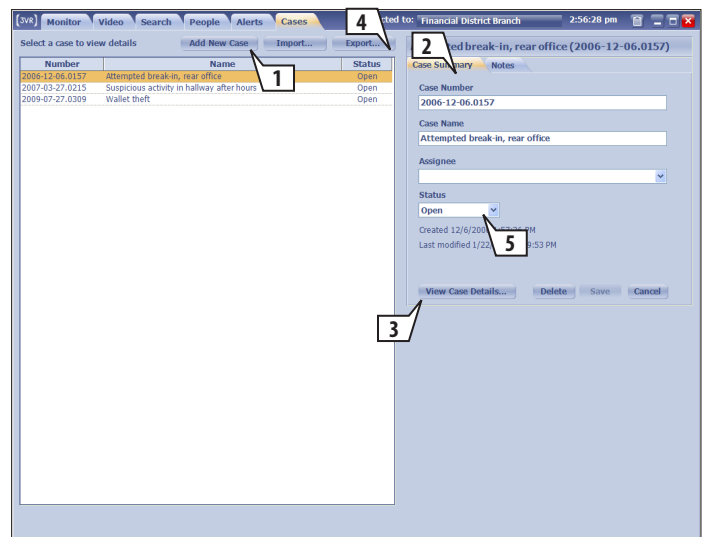
- Using the **Alerts** panel, you can instruct the SmartRecorder to perform a specified action (for example, send an email) when video is recorded on the system that matches certain criteria. For example, you can set up an alert that will email the manager and increase video recording quality whenever motion is detected in a restricted area after hours.
- Alert actions are defined on the **Actions** sub-tab (1). The **Alerts** sub-tab (2) displays all alerts that have been defined on the system. To create an alert click the **New** button. This will bring up the alert editing view shown to the right.
- Define criteria for the alert similar to how you would set up a video search (see the **Search Panel** section on the previous page). Event cards that trigger the alert will be banded with the selected **Alert Color** (3). Under **Actions**, check the boxes next to the actions to perform when the alert is triggered (4). Once you have saved the alert (5) make sure to check the box next to the alert to enable it!



Cases Panel

If there is an incident recorded on multiple cameras or involving multiple people, the **Cases** panel will help you centrally manage surveillance linked to the incident.

- Click **Add New Case** (1) to create a new case. Fill out the fields in the **Case Summary** tab (2).
- Use the **Monitor**, **Search**, or **People** tabs to locate relevant event and people cards. Right-click each card and select **Add Event to Case**.
- To view a summary of the case with the events, notes, and people that have been saved to it, click **View Case Details** (3).
- To export the case to share with management or law enforcement, click the **Export** button (4). When the case is resolved, change the case **Status** to closed (5).



See the 3VR OpCenter User Manual for a comprehensive reference of all OpCenter features.